

Workforce Focus

From the 1000 Islands Region Workforce Development Board.

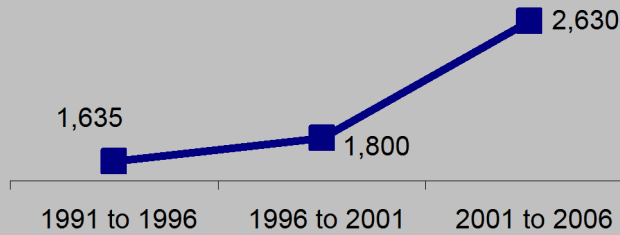
In this Issue:
Census Release

- Immigration
- Language
- Mobility

Immigration

Immigration Levels

Recent immigrants by arrival period, Frontenac-Leeds- Grenville- Loyalist



Growth in Newcomers

The number of immigrants coming to this region grew slightly in the nineties, but jumped significantly between 2001 and 2006.

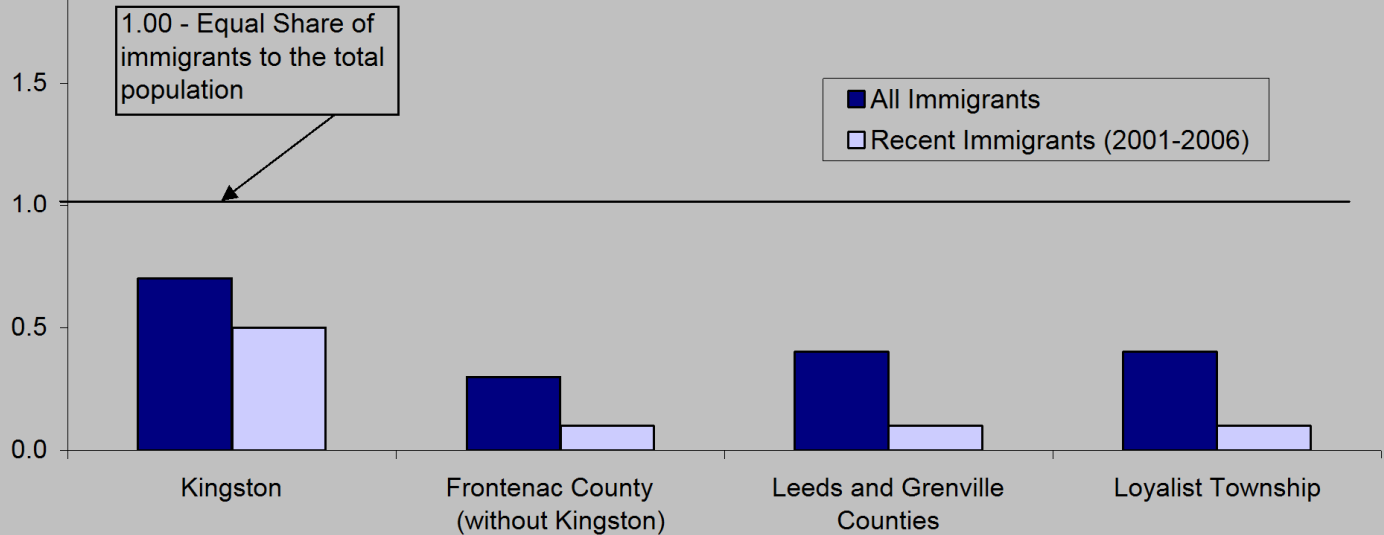
Points of Departure

Top 10 birthplaces of recent immigrants (2001-2006)

Kingston Census Metropolitan Area	Ontario
People's Republic of China	India
United States of America	People's Republic of China
United Kingdom	Pakistan
Pakistan	Philippines
India	Sri Lanka
Egypt	United States of America
Taiwan	Iran
Russian Federation	South Korea
Serbia and Montenegro	Russian Federation
South Korea	Colombia

Share of Immigrants

Relative ratios of immigrants to the total population, Kingston-Frontenac-Leeds-Grenville- Loyalist



Small Immigrant Populations

The relative ratio is calculated by dividing a regions share of Canada's immigrant population by the regions share of Canada's total population. The same share of each would be a 1.00 ratio. Though Kingston leads the area as an immigrant destination, it is still lightly populated with long term and recent immigrants for a city of its size. The surrounding counties of the region are lightly populated with immigrants. These areas are more popular as a final settling place than as an initial destination for new immigrants.



For more information contact The 1000 Islands Region Workforce Development Board at:
900 Queen St., Suite 201, Gananoque, ON K7G 2B6 (613) 382-7462
Email: board@workforcedev.ca

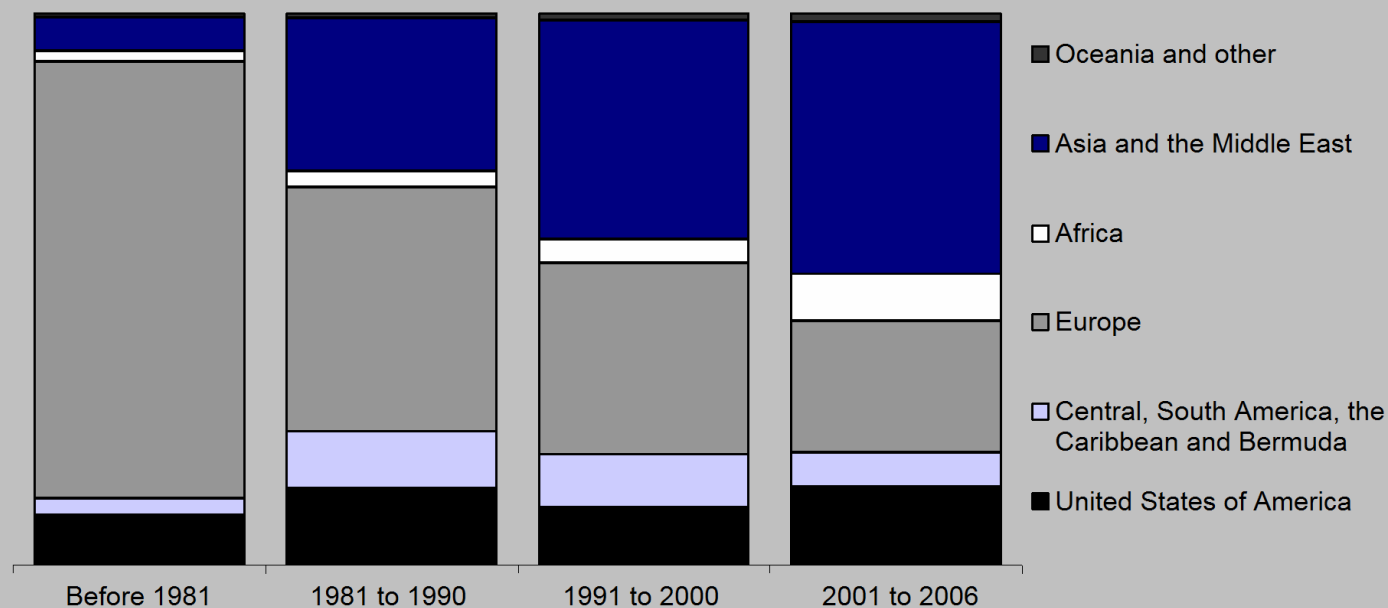
Workforce Focus is an original publication of the Elgin, Middlesex, Oxford Local Training

Created by : Dane Rice

Immigration

Region of Origin Change

Share of immigrant origins by period of arrival, Frontenac-Leeds-Grenville-Loyalist

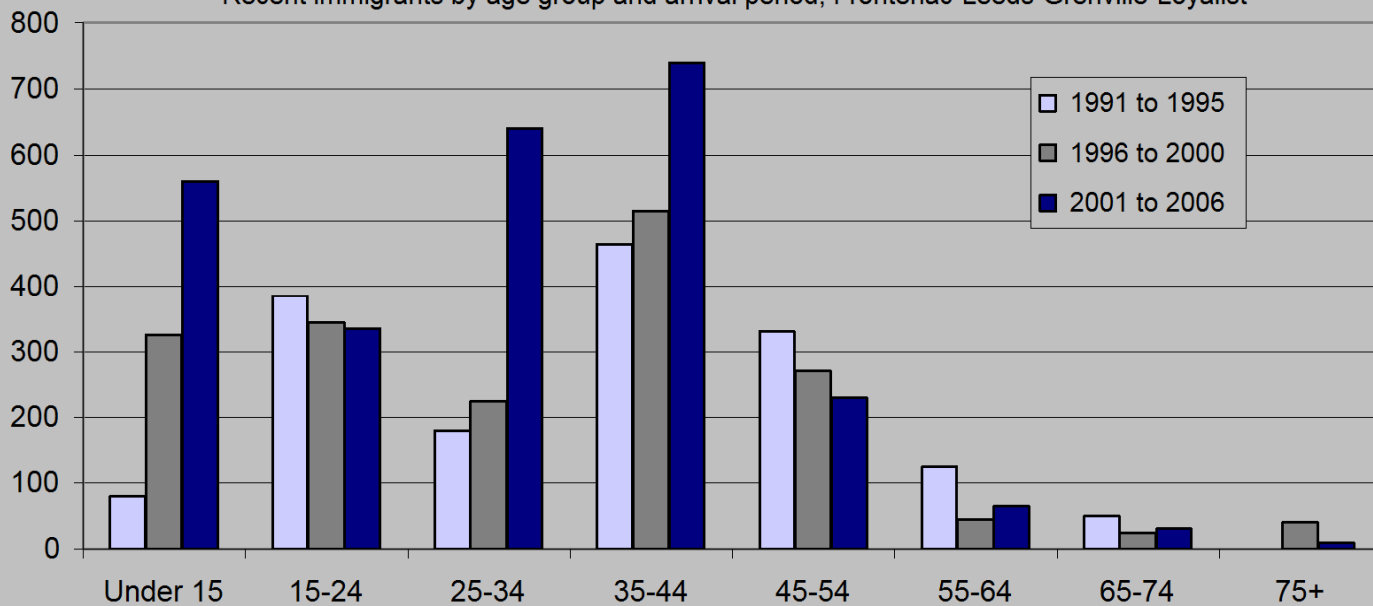


Diversity of Origins

This region receives a more diversified population of new immigrants than the province as a whole. Similar to Ontario, the largest contributor of recent immigrants to this region is Asia and the Middle East with 46% of all newcomers between 2001 and 2006. Europe still ranks second with 24% of all newcomers.

Immigrant Age Changes

Recent immigrants by age group and arrival period, Frontenac-Leeds-Grenville-Loyalist



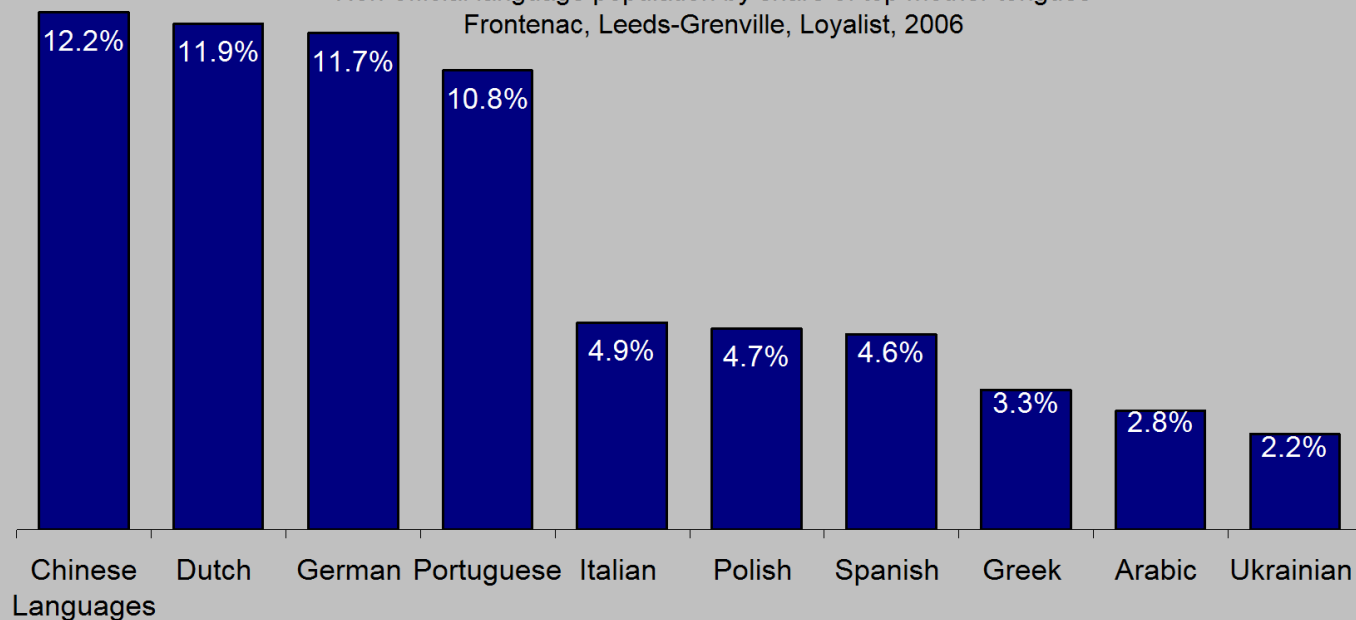
Younger Newcomers

There has been a large increase in the number of recent immigrants to this area under 15 years old and between the ages of 25-44. Ontario's demographic profile for new immigrants shares a similar pattern with one significant distinction: a much larger share of recent immigrants to this region are age 35 to 44.

Language

Allophone Populations

Non-official language population by share of top mother tongues
Frontenac, Leeds-Grenville, Loyalist, 2006

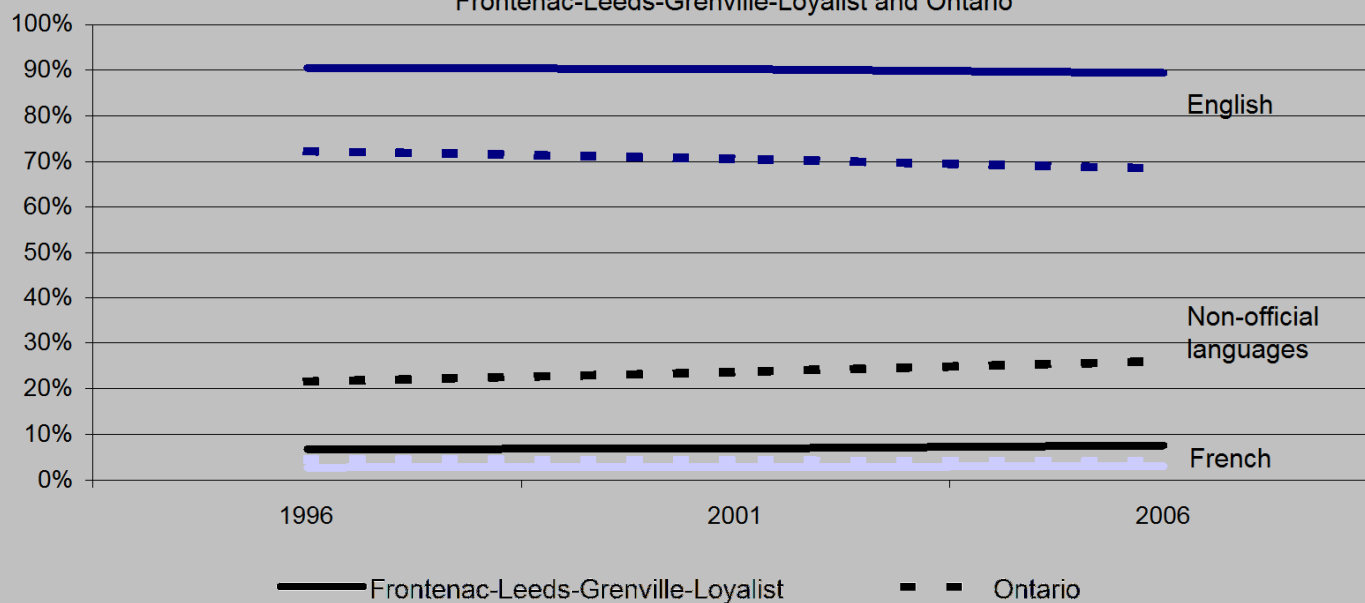


Chinese Languages Lead

Similar to the province as a whole, Chinese languages lead mother tongues among non-official language populations in this region. European languages comprise most of the remaining largest mother tongue populations. Dutch, German, and Portuguese each comprise a larger share of non-official mother tongues in this region than provincially.

Mother Tongues

Total populations by share of mother tongue 1996-2006,
Frontenac-Leeds-Grenville-Loyalist and Ontario



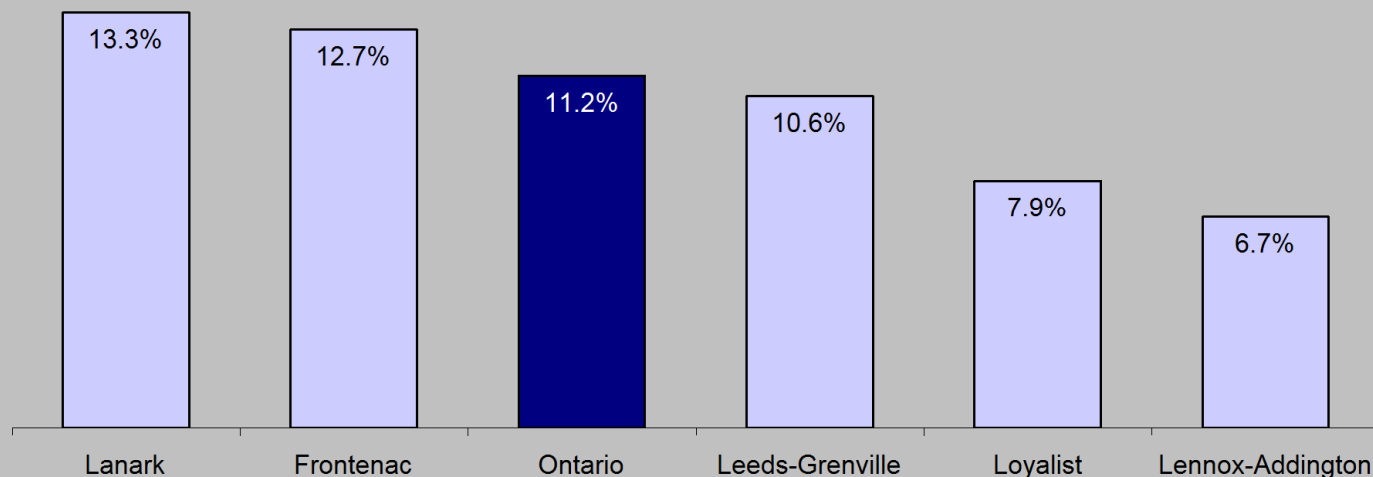
Stagnant Diversification

The language composition of this region has remained very stable. It remains more Anglophone dominated than Ontario collectively is. Nearly 90% of this region's population continues to have English as their mother tongue, while Ontario's Anglophone share has dropped by 4% in 10 years to 68%.

Language

Bilingualism

Fluent knowledge of English and French - Rates by region, 2006



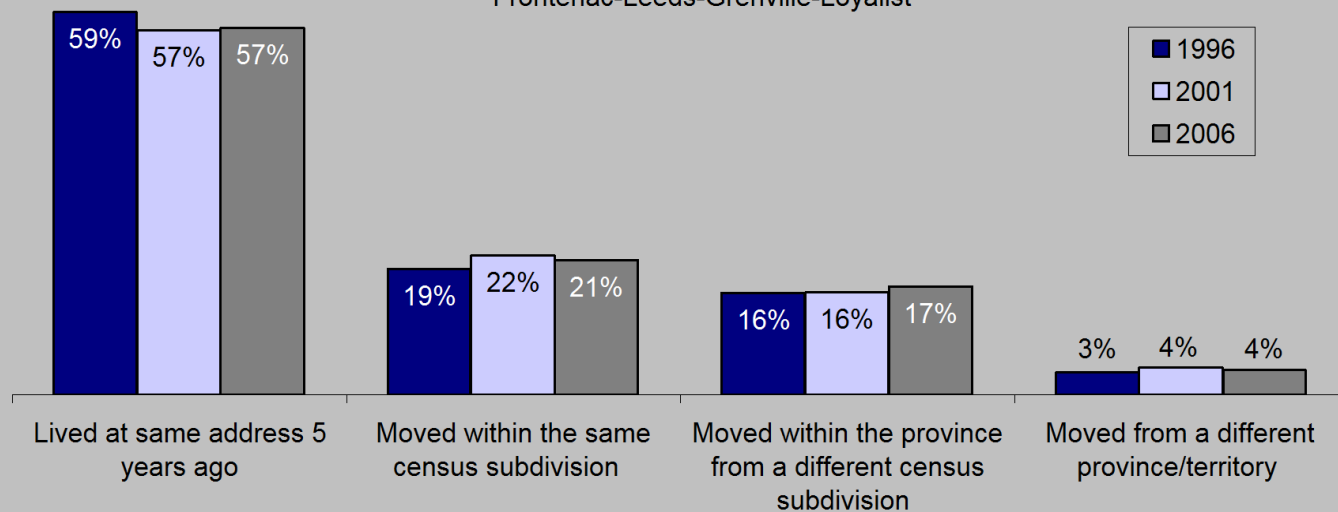
Comparing Bilingualism Rates

Bilingualism is more common in Lanark and Frontenac than the provincial average. Fluency in both official languages is slightly lower in Leeds-Grenville, and significantly lower in Loyalist and Lennox-Addington.

Mobility

Residence Status

Share of population by residence status over five year period
Frontenac-Leeds-Grenville-Loyalist



Moving In

Mobility trends changed little over the past 10 years in this region. Slightly more people move into this region from different provinces and territories than the provincial average, and 5% more move in from within Ontario than average.

The source of all figures used in this issue is Statistics Canada Census Data

SEE MORE LABOUR MARKET INFORMATION ON THE WEB AT
WWW.WORKFORCEDEV.CA

**EMPLOYMENT
ONTARIO**

THE VIEWS EXPRESSED IN THIS DOCUMENT DO NOT NECESSARILY REFLECT THOSE OF
THE GOVERNMENT OF ONTARIO.