

# Workforce Focus

From the 1000 Islands Region Workforce Development Board.

**In this Issue:**

**The Public Sector**

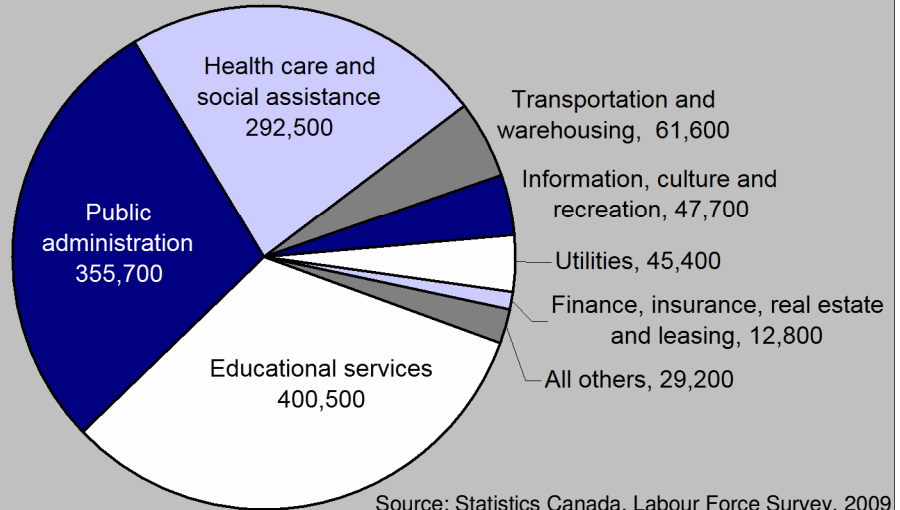
- Composition, Forecast, Career Fields
- Employment Trend, Prominent Occupations

**The Workforce**

Though public sector employment can be found in many industries, the majority takes place in three sectors: public administration, education, and health care and social assistance. Public Administration includes policing, firefighting, the military and a wide variety of administrative positions. A large majority of educational services are publicly operated, employing 31% of the public sector in 2009. Publicly operated health care and social services employ 23% of the public workforce. (Nearly as much health care employment is operated privately, though a large share of it is publicly funded). While Ontario's public sector employment has increased by 30% in the past ten years, the composition has changed little.

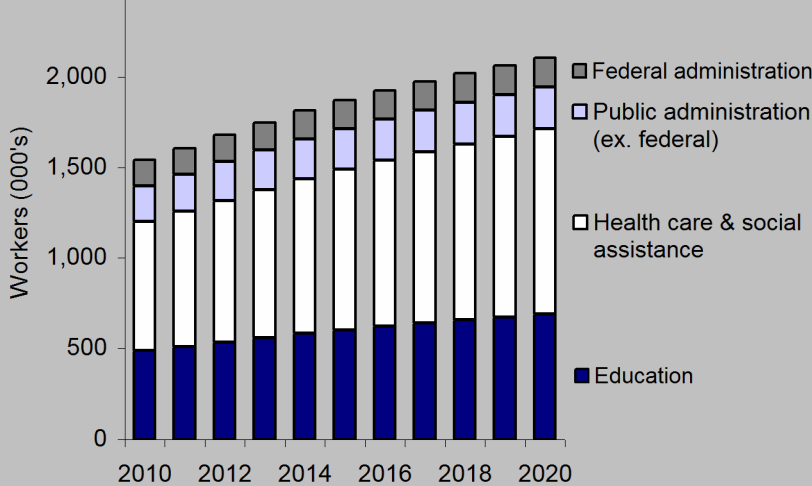
**Public Sector Employment Composition**

Workers by Industry, Ontario, 2009



**Major Public Sectors Employment Forecast**

Ontario 2010 to 2020



**Outlook**

With the global recession of the past two years, the provincial government moved quickly to restrain its spending and froze the size of the provincially operated workforce, with a commitment to reduce it by five per cent by March 31, 2012. This will be achieved through attrition and other measures, while there is no proposal for mandatory lay-offs.

In the anticipated recovery and years following, the wider public sector at all levels of government is expected to continue creating new jobs, with most being in healthcare and education. Health care and social services are forecasted to grow by 45% for a net gain of 315,000 jobs by 2020. Education is forecasted to grow by 41% for a net gain of 200,000, while public administration at all levels is anticipated to grow by 13% for a total of 45,000 jobs.

Sources: Government of Ontario-2010 Budget, and Centre for Spatial Economics, 2009.

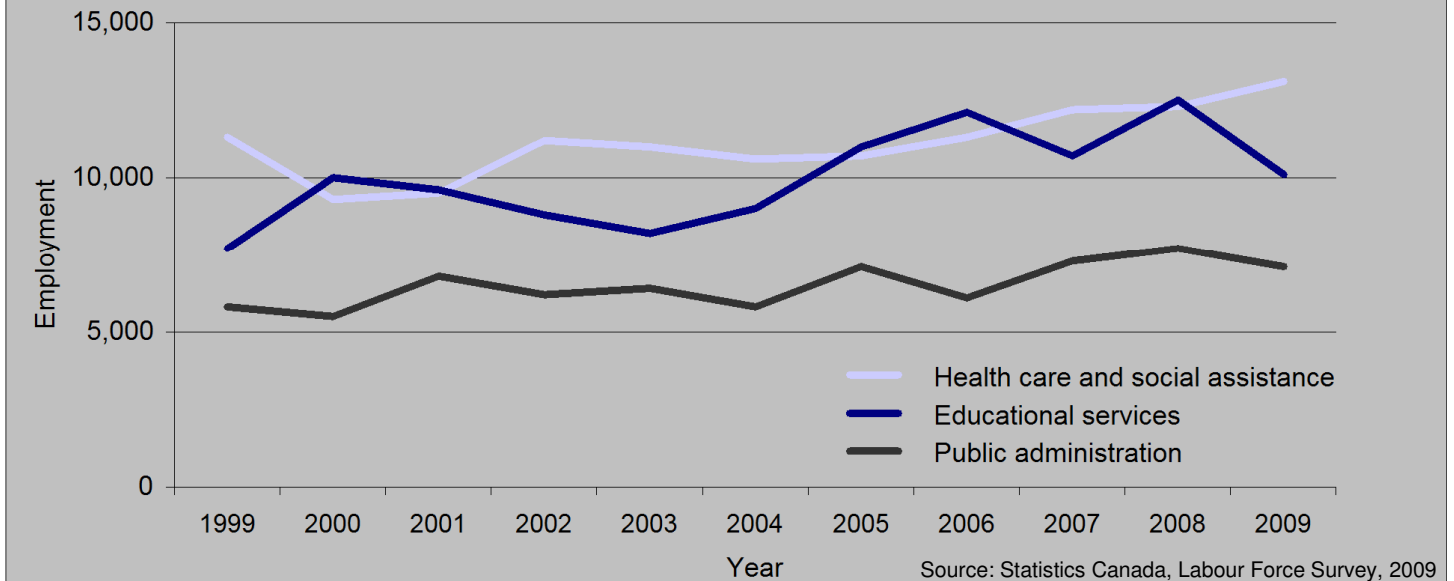
**Career Streams in the Public Sector**

Administrative and Support Services • Communications and Marketing • Consulting and Planning • Corrections and Enforcement • Customer and Client Services • Education and Training • Finance and Economics • Health and Social Services • Human Resources • Information Technology • Inspections and Investigations • Lands and Resources • Legal Services • Policy and Analysis • Maintenance and Trades • Management • Science and Engineering

Source: Government of Ontario, 2010

## Public Sector Employment Trend

Major Public Sectors, Frontenac-Leeds-Grenville-Loyalist, 1999-2009



Local education services employment grew by 31% from 1999 to 2009, while public administration grew by 22% and health care and social services by 16%. (Health care and social assistance in this chart includes both publicly and privately operated services).

## Prominent Occupations in the Local Public Sector

Frontenac-Leeds-Grenville-Loyalist

Source: Statistics Canada, Census Data, 2006

	Employed	Steady Previous Growth	High Retirement Rate
<b>Education</b>			
Elementary school and kindergarten teachers	1,860		✓
Post-secondary teaching and research assistants	1,850	✓	
University professors	1,375		
Secondary school teachers	1,145		✓
Early childhood educators and assistants	1,015	✓	
<b>Healthcare and Social Assistance</b>			
Registered nurses	2,855	✓	✓
Nurse aides, orderlies and patient service associates	1,475		
Community and social service workers	695	✓	
Licensed practical nurses	515		✓
<b>Public Administration</b>			
Occupations unique to the Armed Forces	1,370		
Correctional service officers	1,010		✓
Commissioned officers, Armed Forces	975		
General office clerks	455		✓
Police officers (except commissioned)	445		✓

Large occupations will tend to have more frequent opportunities and ongoing replacement needs. Steady previous growth in this table refers to positive local employment change between both 1996 and 2001, and 2001 and 2006. Steady previous growth could indicate a particularly stable occupation. A high retirement rate in this table refers to a forecasted 10-year retirement rate of at least 15% higher than that of the total local workforce.

SEE MORE LABOUR MARKET INFORMATION ON THE WEB AT  
WWW.WORKFORCEDEV.CA

**EMPLOYMENT  
ONTARIO**

THE VIEWS EXPRESSED IN THIS DOCUMENT DO NOT NECESSARILY REFLECT THOSE OF  
THE GOVERNMENT OF ONTARIO.